

---

RZ Seminar – Elwetritsch – Desktop – Files  
High Performance Computing with Elwetritsch

---

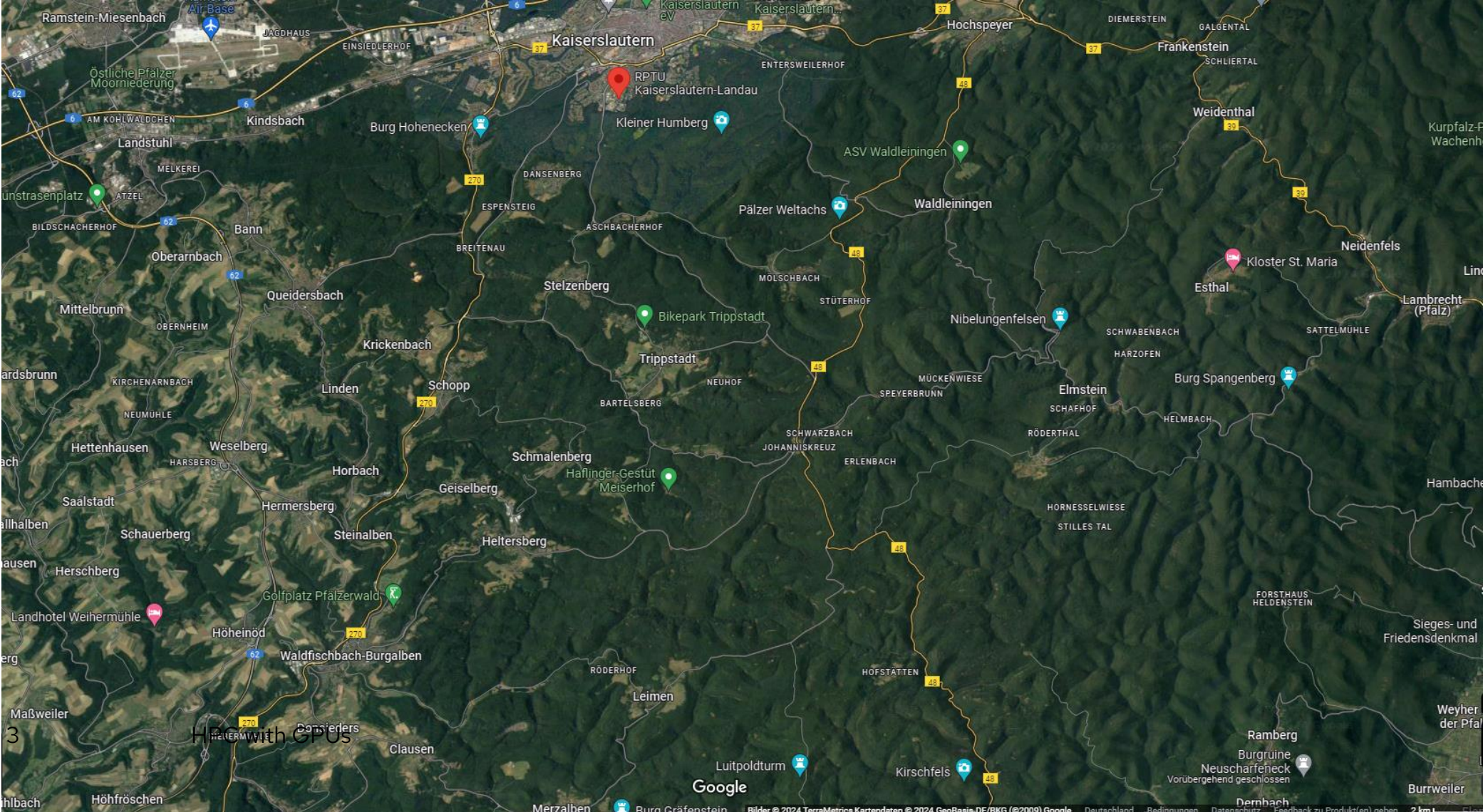


# Elwetritsch



RPTU

# Kaiserslautern



# Overview all seminars

---

- Cluster Elwetritsch
- Accessing Elwetritsch
- Available Software
- Desktop Submitting Jobs - SLURM
- Available Hardware
- Monitoring
- Linux Basics

# Login

---

## Premises

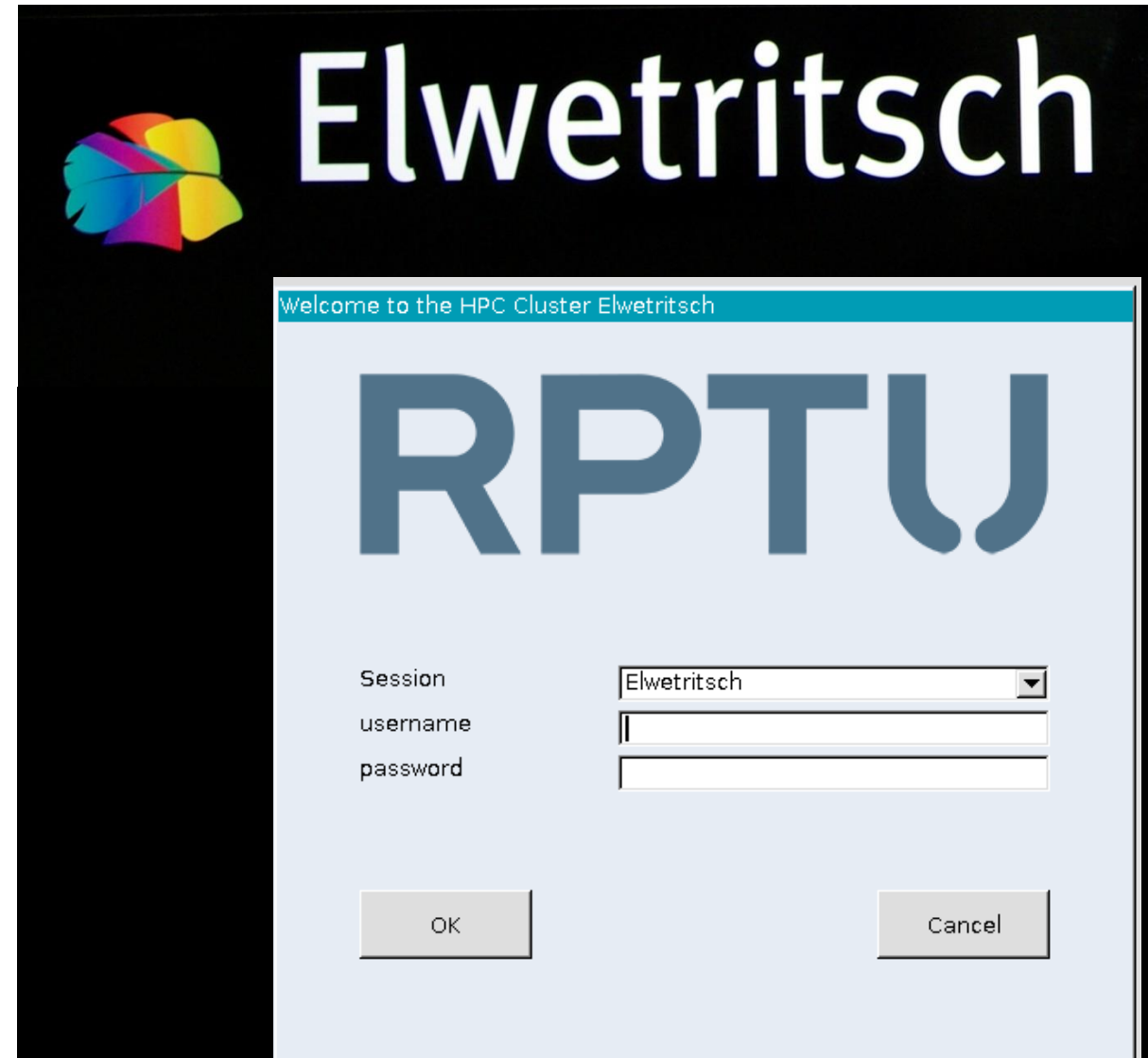
- member of RPTU
- student during a project - access rights assigned by supervisor via [serviceportal](#)
- AHRP members via the [RARP service registration portal](#)
- Control/set [privileges](#)

**Most important - no costs!**

Several [methods to access](#) the cluster

Most popular:

**Remote Desktop Protocol**



# Elwetritsch Basics

---

**4 login** nodes (RPTU)

**2 login** nodes (RARP)

nodes for **computing**

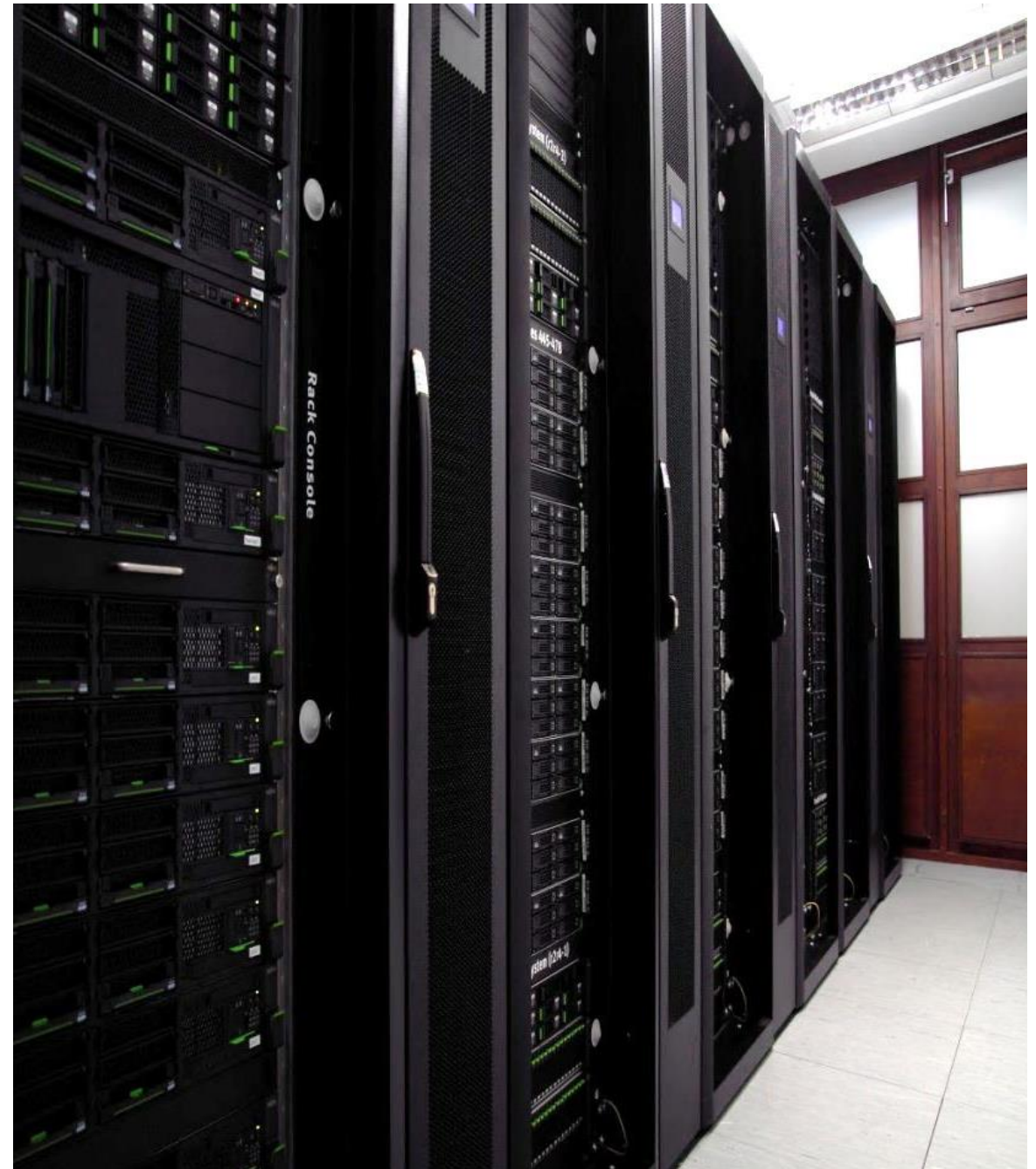
- CPUs only

- GPUs

nodes for **visualization**

**ubiquitous access**

**VPN** required



# Connecting Linux and OS-X

---

local access (RPTU) or VPN required  
intrinsic ssh available  
Please read [ssh.shtml](#) carefully.

`ssh -X elwe4.rz.rptu.de`  
will open a connection which allows X-forwarding for graphical applications.  
Other possibilities: [rdesktop](#), [freerdp](#)

MACs require extension for an open sources [X11-Client](#) or [Apple X11](#), or use the RDP equivalent [cord](#)

# Connecting Windows

---

The RDP (remote desktop protocol) client comes with the basic windows installation and is recommended.

For file transfer we recommend [Bitvise Tunnelier](#).

- to be used locally at RPTU
- ubiquitous use requires VPN
- fast and effective

Installation and key management is described at our YouTube alternative: [Bitvise.mp4](#)



# Using NX

---

On server address `elwe-nx.rptu.de` you may connect via [nomachine](#) after configuration to use

- no UDP
- protocol NX
- host `elwe-nx.rptu.de`
- a fully qualified desktop
- user defined session to login like using `ssh` but with enabled X services

## still more

---

[x2go](#)

which provides a simple and easy to install virtual desktop

**nice-dcv**

requires licenses on our site. Therefore access is limited. In some special cases commercial graphical programs, like Ansys and Abaqus, won't run otherwise.

Please contact us.

To be used in a [browser window](#).

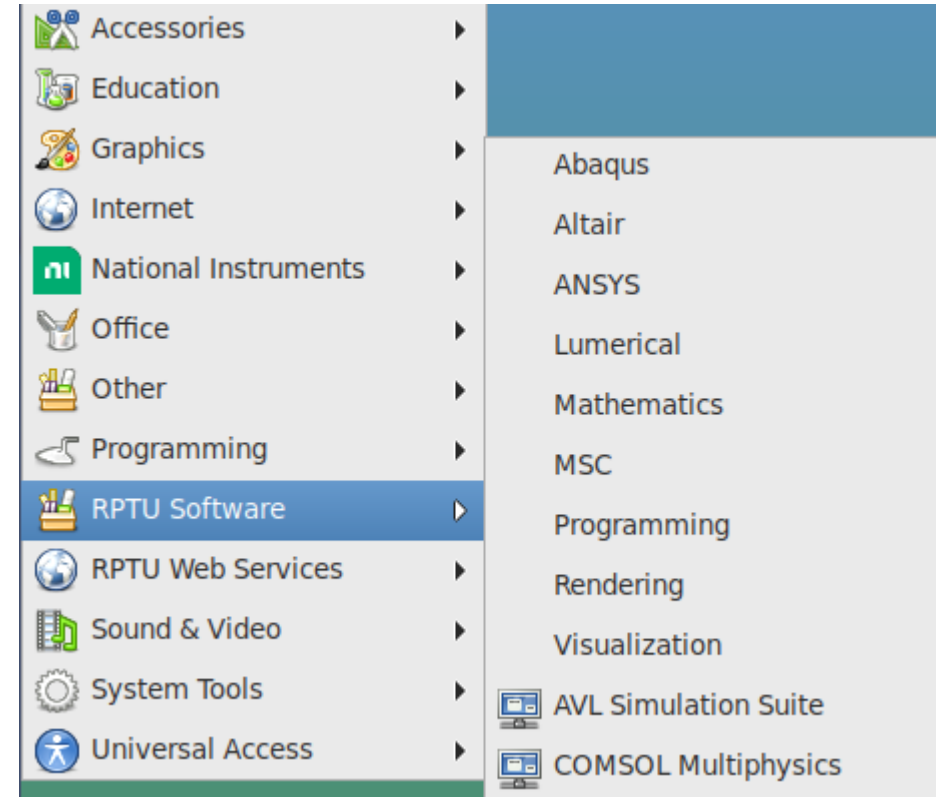
# RDP Desktop

---

Classical graphical desktop

- file manager
- menus
- common look & feel

set of accessories



# Files on Elwetritsch

---



"Typical" Home (located at /home/<your user id>)

- cosy
- secure (we take backups)
- but limited
- restore deleted files

If you have problems with your quota - it might be your trash



# Files on Elwetritsch

---



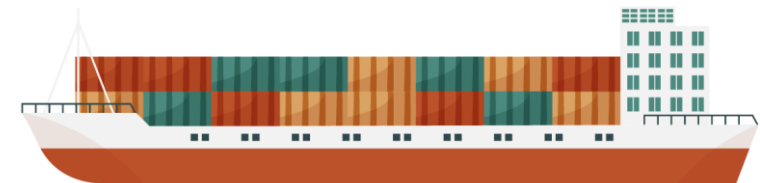
A little bit more?

/scratch/<your user id>) waits for you.

- no quota
- no backup - deleted files are gone

This is the right place for files  
casual read/write  
GB sized  
not used for AI training

In your scratch-folder you find a folder large\_files.  
that's for single large files (100GB)  
not for many smaller files in a large volume



**RPTU**

# Files on Elwetritsch

---



And here is the file space for AI  
Many small files you visit frequently.  
Write us an email and we will grant you space in /work/<your user id>

- no quota
- no backup

If your working group works on a common training set

- please contact us
- we arrange just another file space in /archive
- one for the whole team

# Files on Elwetritsch

---



Some hints on graphical file managing software

Removing files will move them to your trash

- you may exceed your quota
- it lasts long - the files are copied



See [FAQ - How to delete many files?](#)

Save /scratch/<your user id> in a bookmark to avoid searching for it

If you want to work on many files (copy, move, remove ) them:



**don't do it graphically (one by one).**

In our seminar you learn a bit of LINUX  
it's so easy to avoid that havoc